

Samson TBR Size and Availability Chart

Application Type		Regional Service									On/Off Road Service					Winter Service	Urban Service	
Rim	Pattern	GI282A	GI283A	GI286A	GI267D	GI268D	GI251T	GI252T	GI283T	GI286T	GI662A	GI665A	GI689A	GI663D	GI687D	GI670T	GI718D	GI828A
	Size																	
20"	11.00R20		●												●			
	12.00R20														●			
17.5"	215/75R17.5		●						●									
	235/75R17.5		●						●									
19.5"	225/70R19.5		●															
	245/70R19.5		●															
	265/70R19.5		●															
22.5"	9R22.5		●															
	10R22.5		●								●							
	11R22.5	●	●			●					●	●						●
	12R22.5	●			●						●							
	13R22.5											●		●	●			
	255/70R22.5		●															
	275/70R22.5		●															●
	315/70R22.5	●			●													
	275/80R22.5		●															
	295/80R22.5	●			●						●							●
	315/80R22.5	●			●						●				●			
	385/55R22.5							●										
	385/65R22.5			●						●			●			●		
	425/65R22.5									●			●			●		
	445/65R22.5												●			●		
	455/40R22.5							●										

Samson TBR Application Chart

	Regional Service	On & Off Road Service	Urban Service	Winter Service
All-Position	GL282A GL283A GL286A	GL662A GL665A GL689A	GL828A	
Drive	GL267D GL268D	GL663D GL687D		GL718D
Trailer	GL251T GL252T GL283T GL286T	GL670T		

Tread Pattern Designations

Samson uses specific names, numbers, or letters to identify different types of tread patterns, benefits.

GL 2 8 3 A L.E.T.

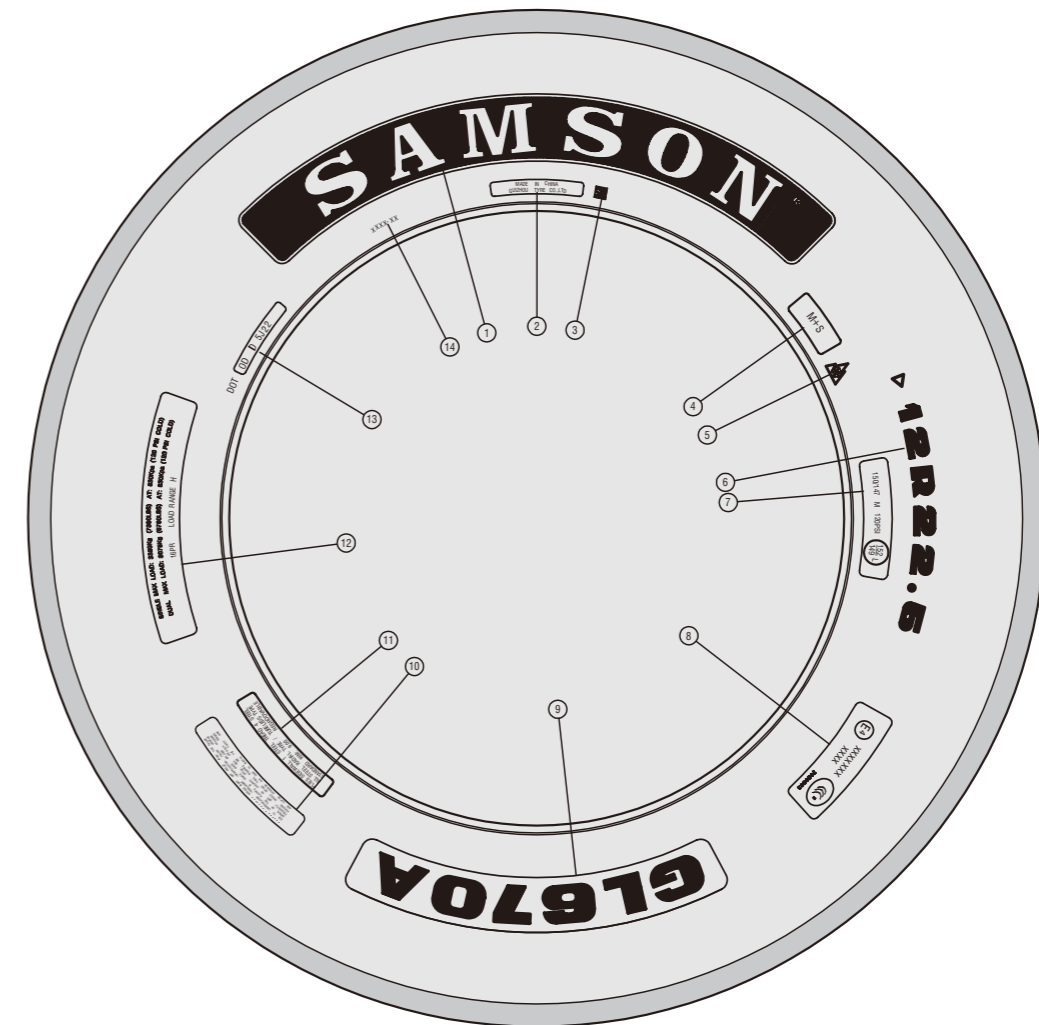
①
②
③
④
⑤

- ① SAMSON Radial ② Application ③ Serial Number
- ④ Position ⑤ Benefit

For example:

Samson Radial	GL=SAMSON Radial
Application	1 = Long Haul Highway Service
	2 = Regional Service
	6 = On & Off Road Service
	8 = Urban Buses Service
	9 = Off Road Service
0 = Military Service	
Position	S = Steer
	A = All-Position
	D = Drive
	T = Trailer
Benefit	L.E.T. = Fuel Efficient
	+ = Reinforced Bead Design
	ULT = Ultra Design

Samson Tyre Sidewall Marks Instruction



- ① Brand Name
- ② Manufacturing Country and Manufacturer
- ③ SNI Mark
- ④ M+S
- ⑤ The Snowflake on-the-Mountain-Peak Symbol
- ⑥ Tyre Size
- ⑦ Load Index, Speed Symbol
- ⑧ E-Mark Code, CCC Mark
- ⑨ Pattern Name
- ⑩ Safety Warning
- ⑪ Carcass Structure, Tire Type, Rim, Regroovable
- ⑫ Ply Rating, Load Range
- ⑬ Dot Code
- ⑭ Mould Number

Radial Truck Tyre Contents

Regional Highway Service.....5-13

On & Off Road Service.....14-19

Winter Service.....20

Urban Bus Service.....21

Tyre Load Chart.....22

Tyre Regrooving.....23-24

GL282A Regional Highway All-Position Radial

Product Features

- Optimised structure and compound formulation gives excellent tyre to performance cost ratio
- Low rolling resistance design reduces the fuel consumption of the vehicle giving lowers running costs
- Design of the shoulder profile gives better heat disperison and longer crown durability
- New crown design assists in increasing the puncture resistance of the tyre , effectively improving safety
- Optimised groove design gives excellent wet grip performance



Recommended Vehicle Types & Position



Approved Position



TECHNICAL DATA

Part No.	ERP No.	Tyre Size	Ply Rating	Load Index	Speed Symbol	Type	Pattern	Section Width (mm)	Section Width (in.)	Overall Diam. (mm)	Overall Diam. (in.)	Infl. (kPa)	Infl. (psi)	Max. Load (kg)	Max. Load (lbs.)	Design Rim Width	Tyre Valve	Tread Depth (mm)	Tread Depth (32nds)	Energy efficiency class	Wet grip class	Rolling noise class
13GBB653	A1ABB410	*E 11R22.5 ^{SL}	16	S146/D143	M	TL	GL282A	279	11.0	1050	41.3	830	120	S3000/D2725	S6610/D6005	8.25	DR07	13.9	17.5	D	B	74
13GBB771	11ABB443	E 12R22.5 ^{SL}	16	S150/D147	M	TL	GL282A	300	11.8	1084	42.7	850	125	S3350/D3075	S7390/D6780	9.00	DR08	15.0	18.9	D	C	75
13GBB808	11ABB464	E 12R22.5 ^{SL}	18	S152/D148	L	TL	GL282A	300	11.8	1084	42.7	850	125	S3550/D3150	S7830/F6940	9.00	DR08	15.0	18.9	D	C	75
13GBB695	A1ABB449	E 295/80R22.5 ^{SL}	16	S150/D146	M	TL	GL282A	298	11.7	1044	41.1	800	115	S3350/D3150	S7390/D6610	9.00	DR08	14.8	18.6	D	B	75
13GBB739	A1ABB404	E 295/80R22.5 ^{SL}	18	S152/D148	L	TL	GL282A	298	11.7	1044	41.1	850	125	S3550/D3150	S7830/D6940	9.00	DR08	14.8	18.6	D	B	75
13GBB676	A1ABB434	E 315/70R22.5 ^{SL}	18	S152/D148	L	TL	GL282A	312	12.3	1014	39.9	850	125	S3550/D3150	S7830/D6940	9.00	DR08	14.8	18.6	D	B	75
13GBB693	11ABB412	E 315/80R22.5 ^{SL}	18	S154/D150	M	TL	GL282A	312	12.3	1076	42.4	825	120	S3750/D3350	S8270/D7390	9.00	DR08	15.3	19.3	D	B	75
13GBB728	A1ABB480	E 315/80R22.5 ^{SL}	20	S156/D150	L	TL	GL282A	312	12.3	1076	42.4	850	125	S4000/D3750	S8820/D7390	9.00	DR08	15.3	19.3	D	B	75

Note: *- SmartWay Certification

GL283A Regional Highway All-Position Radial

Product Features

- New crown design assists in increasing the puncture resistance of the tyre , effectively improving safety
- Latest tread compound formulation gives excellent abrasion resistance
- Wide crown design allows for better operational stability of the tyre
- Deep tread pattern gives long service life
- Optimised groove design gives excellent wet grip performance

Recommended Vehicle Types & Position



Approved Position



TECHNICAL DATA

Part No.	ERP No.	Tyre Size	Ply Rating	Load Index	Speed Symbol	Type	Pattern	Section Width (mm)	Section Width (in.)	Overall Diam. (mm)	Overall Diam. (in.)	Infl. (kPa)	Infl. (psi)	Max. Load (kg)	Max. Load (lbs.)	Design Rim Width	Tyre Valve	Tread Depth (mm)	Tread Depth (32nds)	Energy efficiency class	Wet grip class	Rolling noise class
13GBB366	A1ABB258	E 11.00R20 S ^L	16	S150/D147	K	TT	GL283A	293	11.5	1085	42.7	830	120	S3350/D3075	S7390/D6780	8.00	DG09C	16.0	20.2	D	B	76
13GBB536	11ABB314	E 11.00R20 S ^L	18	S152/D149	J	TT	GL283A	293	11.5	1085	42.7	930	135	S3550/D3250	S7830/D7160	8.00	DG09C	16.0	20.2	D	B	76
13GBB298	A1ABB212	E 9R22.5 S ^L	14	S136/D134	M	TL	GL283A	229	9.0	974	38.3	830	120	S2240/D2120	S4940/D4675	6.75	DR06	14.5	18.3	D	C	76
13GBB286	11ABB100	E 10R22.5 S ^L	14	S141/D139	M	TL	GL283A	254	10.0	1020	40.2	790	115	S2575/D2430	S5675/D5355	7.50	DR06	15.0	18.9	D	C	76
13GBB513	11ABB301	E 10R22.5 S ^L	16	S144/D142	L	TL	GL283A	254	10.0	1020	40.2	850	125	S2800/D2650	S6175/D5840	7.50	DR06	15.0	18.9	D	C	76
13GBB222	A1ABB158	E 11R22.5 S ^L	16	S146/D143	M	TL	GL283A	279	11.0	1050	41.3	830	120	S3000/D2725	S6610/D6005	8.25	DR07	15.0	18.9	C	C	76
13GBB378	A1ABB178	E 215/75R17.5 S ^L	12	S126/D124	M	TL	GL283A	212	8.3	767	30.2	700	100	S1700/D1600	S3750/D3525	6.00	DR04	12.0	15.1	D	C	76
13GBB280	11ABB241	E 215/75R17.5 S ^L	16	S135/D133	J	TL	GL283A	212	8.3	767	30.2	860	125	S2180/D2060	S4805/D4540	6.00	DR04	12.0	15.1	D	C	76
13GBB246	A1ABB182	E 235/75R17.5 S ^L	14	S132/D130	M	TL	GL283A	233	9.2	797	31.4	775	110	S2000/D1900	S4410/D4190	6.75	DR05	13.0	16.4	D	C	76
13GBB379	A1ABB183	E 235/75R17.5 S ^L	16	S143/D141	J	TL	GL283A	233	9.2	797	31.4	860	125	S2725/D2575	S6005/D5675	6.75	DR05	13.0	16.4	D	C	76
13GBB244	A1ABB180	E 225/70R19.5 S ^L	14	S128/D126	L	TL	GL283A	226	8.9	811	31.9	700	100	S1800/D1700	S3970/D3750	6.75	DR06	13.0	16.4	D	C	76
13GBB248	A1ABB184	E 245/70R19.5 S ^L	16	S136/D134	M	TL	GL283A	248	9.8	839	33.0	825	120	S2240/D2120	S4940/D4675	7.50	DR06	14.0	17.6	D	C	76
13GBB250	A1ABB186	E 265/70R19.5 S ^L	16	S140/D138	M	TL	GL283A	262	10.3	867	34.1	775	110	S2500/D2360	S5510/D5205	7.50	DR06	13.0	16.4	D	C	76
13GBB558	11ABB328	E 265/70R19.5 S ^L	18	S143/D141	J	TL	GL283A	262	10.3	867	34.1	850	125	S2725/D2575	S6005/D5675	7.50	DR06	13.0	16.4	D	C	76
13GBB203	A1ABB139	E 255/70R22.5 S ^L	16	S140/D137	M	TL	GL283A	255	10.0	930	36.6	800	115	S2500/D2300	S5510/D5070	7.50	DR06	14.0	17.6	C	C	76
13GBB251	A1ABB187	E 275/70R22.5 S ^L	16	S144/D141	M	TL	GL283A	276	10.9	958	37.7	830	120	S2800/D2575	S6175/D5675	8.25	DR07	15.0	18.9	C	C	76
13GBB552	11ABB322	E 275/70R22.5 S ^L	18	S148/D145	K	TL	GL283A	276	10.9	958	37.7	900	130	S3150/D2900	S6940/D6395	8.25	DR07	15.0	18.9	C	C	76
13GBB567	11ABB337	E 275/80R22.5 S ^L	16	S147/D144	M	TL	GL283A	276	10.9	1012	39.8	830	120	S3075/D2800	S6780/D6175	8.25	DR07	15.0	18.9	D	C	72

GL286A Regional Highway All-Position Radial

Product Features

- Optimised shoulder profile design makes contact pressure distribution more uniform, preventing irregular wear
- Double tread structure reduces heat build up giving excellent durability
- The use of a special tread compound gives lower rolling resistance and fuel consumption
- Optimised groove design disperses water readily giving high wet grip performance

Recommended Vehicle Types & Position



Approved Position



TECHNICAL DATA

Part No.	ERP No.	Tyre Size	Ply Rating	Load Index	Speed Symbol	Type	Pattern	Section Width (mm)	Section Width (in.)	Overall Diam. (mm)	Overall Diam. (in.)	Infl. (kPa)	Infl. (psi)	Max. Load (kg)	Max. Load (lbs.)	Design Rim Width	Tyre Valve	Tread Depth (mm)	Tread Depth (32nds)	Energy efficiency class	Wet grip class	Rolling noise class
13GBB689	A1ABB445	E 385/65R22.5 S ^L	18	S158	L	TL	GL286A	386	15.2	1072	42.2	830	120	S4250	S9370	11.75	TL	15.3	19.3	D	B	76
13GBB691	A1ABB446	E 385/65R22.5 S ^L	20	S160	K	TL	GL286A	386	15.2	1072	42.2	900	130	S4500	S9920	11.75	TL	15.3	19.3	D	B	76

GL267D Regional Highway Drive-Position Radial M+S

Product Features

- Optimised structure and compound formulation gives excellent tyre to performance cost ratio
- Low rolling resistance design reduces the fuel consumption of the vehicle giving lowers running costs
- Double tread structure reduces heat build up giving excellent durability
- Tread pattern shape & design gives good wet grip performance
- Unidirectional pattern design and unique block design provide for excellent overall driving properties

Recommended Vehicle Types & Position



- Recommended Position ●
 Alternative Possible Position ●



TECHNICAL DATA

Part No.	ERP No.	Tyre Size	Ply Rating	Load Index	Speed Symbol	Type	Pattern	Section Width (mm)	Section Width (in.)	Overall Diam. (mm)	Overall Diam. (in.)	Infl. (kPa)	Infl. (psi)	Max. Load (kg)	Max. Load (lbs.)	Design Rim Width	Tyre Valve	Tread Depth (mm)	Tread Depth (32nds)	Energy efficiency class	Wet grip class	Rolling noise class
13GBB801	A1ABB526	[†] 12R22.5 ^{SL}	16	S150/D147	M	TL	GL267D	300	11.8	1084	42.7	850	125	S3350/D3075	S7390/D6780	9.00	DR08	17.8	22.4	D	C	75
13GBB807	11ABB463	[†] 12R22.5 ^{SL}	18	S152/D148	L	TL	GL267D	300	11.8	1084	42.7	850	125	S3550/D3150	S7830/F6940	9.00	DR08	17.8	22.4	D	C	75
13GBB673	A1ABB430	[†] 295/80R22.5 ^{SL}	16	S150/D146	M	TL	GL267D	298	11.7	1044	41.1	800	115	S3350/D3000	S7390/D6610	9.00	DR08	17.8	22.4	D	C	75
13GBB729	A1ABB482	[†] 295/80R22.5 ^{SL}	18	S152/D148	L	TL	GL267D	298	11.7	1044	41.1	850	125	S3550/D3150	S7830/F6940	9.00	DR08	17.8	22.4	D	C	75
13GBB675	A1ABB432	[†] 315/70R22.5 ^{SL}	18	S152/D148	L	TL	GL267D	312	12.3	1014	39.9	850	125	S3550/D3150	S7830/D6940	9.00	DR08	17.8	22.4	D	C	75
13GBB628	11ABB383	[†] 315/80R22.5 ^{SL}	18	S154/D150	M	TL	GL267D	312	12.3	1076	42.4	825	120	S3750/D3350	S8270/D7390	9.00	DR08	17.8	22.4	E	C	75
13GBB730	A1ABB483	[†] 315/80R22.5 ^{SL}	20	S156/D150	L	TL	GL267D	312	12.3	1076	42.4	850	125	S4000/D3750	S8820/D7390	9.00	DR08	17.8	22.4	E	C	75

GL268D Regional Highway Drive-Position Radial M+S

Product Features

- Double tread structure reduces heat build up giving excellent durability
- Wider and deeper tread pattern gives excellent abrasion resistance and longer service life
- Tread pattern shape & design gives excellent wet grip performance
- Unidirectional pattern design and unique block design provide for excellent overall driving properties

Recommended Vehicle Types & Position



- Recommended Position ●
 Alternative Possible Position ●



TECHNICAL DATA

Part No.	ERP No.	Tyre Size	Ply Rating	Load Index	Speed Symbol	Type	Pattern	Section Width (mm)	Section Width (in.)	Overall Diam. (mm)	Overall Diam. (in.)	Infl. (kPa)	Infl. (psi)	Max. Load (kg)	Max. Load (lbs.)	Design Rim Width	Tyre Valve	Tread Depth (mm)	Tread Depth (32nds)	Energy efficiency class	Wet grip class	Rolling noise class
A1ABB264	A1ABB264	[†] 11R22.5 ^{SL}	16	S146/D143	M	TL	GL268D	279	11.0	1050	41.3	830	120	S3000/D2725	S6610/D6005	8.25	DR07	20.5	25.8	D	B	76

GL251T Regional Highway Trailer-Position Radial

Product Features

- Special compound formulation giving high abrasion resistance and high speed performance
- Four straight line circumferential grooves around tread giving excellent overall properties when fitted to a trailer
- Unique narrow sipes and lateral patterns give the tyre good traction on wet road conditions
- A unique decoupling design at the shoulder of the tyre prevents irregular wear
- Low rolling resistance design reduces the fuel consumption of the vehicle giving lowers running costs

Recommended Vehicle Types & Position



- Recommended Position ●
 Alternative Possible Position ●



TECHNICAL DATA

Part No.	ERP No.	Tyre Size	Ply Rating	Load Index	Speed Symbol	Type	Pattern	Section Width (mm)	Section Width (in.)	Overall Diam. (mm)	Overall Diam. (in.)	Infl. (kPa)	Infl. (psi)	Max. Load (kg)	Max. Load (lbs.)	Design Rim Width	Tyre Valve	Tread Depth (mm)	Tread Depth (32nds)	Energy efficiency class	Wet grip class	Rolling noise class
13GBB844	A1ABB555	455/40R22.5 ^{S1}	20	S160	J	TL	GL251T	453	17.8	936	36.9	900	130	S4500	S9920	15.00	TL	13.7	17.3	C	C	72

GL252T Regional Highway Trailer-Position Radial

Product Features

- Special compound formulation giving high abrasion resistance and high speed performance
- Four straight line circumferential grooves around tread giving excellent overall properties when fitted to a trailer
- Unique narrow sipes and lateral patterns give the tyre good traction on wet road conditions
- A unique decoupling design at the shoulder of the tyre prevents irregular wear
- Low rolling resistance design reduces the fuel consumption of the vehicle giving lowers running costs

Recommended Vehicle Types & Position



- Recommended Position ●
 Alternative Possible Position ●



TECHNICAL DATA

Part No.	ERP No.	Tyre Size	Ply Rating	Load Index	Speed Symbol	Type	Pattern	Section Width (mm)	Section Width (in.)	Overall Diam. (mm)	Overall Diam. (in.)	Infl. (kPa)	Infl. (psi)	Max. Load (kg)	Max. Load (lbs.)	Design Rim Width	Tyre Valve	Tread Depth (mm)	Tread Depth (32nds)	Energy efficiency class	Wet grip class	Rolling noise class
13GBB840	A1ABB555	385/55R22.5 ^{S1}	20	S160	K	TL	GL252T	386	15.2	996	39.2	900	130	S4500	S9920	12.25	TL	14.7	18.5	C	C	72

GL283T Regional Highway Trailer-Position Radial

Product Features

- New crown design assists in increasing the puncture resistance of the tyre, effectively improving safety
- Latest tread compound formulation gives excellent abrasion resistance
- Latest bead design & technology gives tyres exceptional bead durability
- Deep tread pattern gives long service life
- Optimised groove design gives the tyre good wet grip characteristics

Recommended Vehicle Types & Position



- Recommended Position ●
 Alternative Possible Position ●



TECHNICAL DATA

Part No.	ERP No.	Tyre Size	Ply Rating	Load Index	Speed Symbol	Type	Pattern	Section Width (mm)	Section Width (in.)	Overall Diam. (mm)	Overall Diam. (in.)	Infl. (kPa)	Infl. (psi)	Max. Load (kg)	Max. Load (lbs.)	Design Rim Width	Tyre Valve	Tread Depth (mm)	Tread Depth (32nds)	Energy efficiency class	Wet grip class	Rolling noise class
13GBB553	11ABB323	^E 215/75R17.5 ^{SL}	12	S126/D124	M	TL	GL283T	212	8.3	767	30.2	700	100	S1700/D1600	S3750/D3525	6.00	DR04	12.0	15.1	D	C	76
13GBB555	11ABB325	^E 215/75R17.5 ^{SL}	16	S135/D133	J	TL	GL283T	212	8.3	767	30.2	860	125	S2180/D2060	S4805/D4540	6.00	DR04	12.0	15.1	D	C	76
13GBB556	11ABB326	^E 235/75R17.5 ^{SL}	14	S132/D130	M	TL	GL283T	233	9.2	797	31.4	775	110	S2000/D1900	S4410/D4190	6.75	DR05	13.0	16.4	D	C	76
13GBB557	11ABB327	^E 235/75R17.5 ^{SL}	16	S143/D141	J	TL	GL283T	233	9.2	797	31.4	860	125	S2725/D2575	S6005/D5675	6.75	DR05	13.0	16.4	D	C	76

GL286T Regional Highway Trailer-Position Radial

Product Features

- Latest shoulder profile design gives uniform contact pressure preventing irregular wear
- Double tread structure reduces heat build up giving excellent durability
- The use of a special tread compound gives lower rolling resistance and fuel consumption
- Optimised groove design disperses water readily giving high wet grip performance

Recommended Vehicle Types & Position



- Recommended Position ●
 Alternative Possible Position ●



TECHNICAL DATA

Part No.	ERP No.	Tyre Size	Ply Rating	Load Index	Speed Symbol	Type	Pattern	Section Width (mm)	Section Width (in.)	Overall Diam. (mm)	Overall Diam. (in.)	Infl. (kPa)	Infl. (psi)	Max. Load (kg)	Max. Load (lbs.)	Design Rim Width	Tyre Valve	Tread Depth (mm)	Tread Depth (32nds)	Energy efficiency class	Wet grip class	Rolling noise class
13GBB271	A1ABB207	^E 385/65R22.5 ^{SL}	18	158	L	TL	GL286T	389	15.3	1072	42.2	850	125	S4250	S9370	11.75	TL	15.5	19.5	D	B	76
13GBB546	A1ABB365	^E 385/65R22.5 ^{SL}	20	160	K	TL	GL286T	389	15.3	1072	42.2	900	130	S4500	S9920	11.75	TL	15.5	19.5	D	B	76
13GBB202	A1ABB137	^E 425/65R22.5 ^{SL}	20	165	K	TL	GL286T	430	16.9	1124	44.3	825	120	S1500	S11400	12.25	TL	16.5	20.8	C	C	72

GL662A On & Off Road All-Position Radial M+S

Product Features

- Optimised structure and compound formulation gives excellent tyre to performance cost ratio
- The most recent low rolling resistance design decreases fuel consumption and lowers the overall running costs
- Excellent tear resistance even under bad surface conditions
- Double tread structure reduces heat build up
- Special high traction pattern design
- Lateral groove at shoulder area, assists heat dispersion ensuring higher durability
- Latest tread compound technology gives the optimum compromise between wear and tear resistance

Recommended Vehicle Types & Position



Recommended Position ●
Alternative Possible Position ●



TECHNICAL DATA

Part No.	ERP No.	Tyre Size	Ply Rating	Load Index	Speed Symbol	Type	Pattern	Section Width (mm)	Section Width (in.)	Overall Diam. (mm)	Overall Diam. (in.)	Infl. (kPa)	Infl. (psi)	Max. Load (kg)	Max. Load (lbs.)	Design Rim Width	Tyre Valve	Tread Depth (mm)	Tread Depth (32nds)	Energy efficiency class	Wet grip class	Rolling noise class
13GBB827	A1ABB542	^E 10R22.5 ^{SL}	14	S141/D139	L	TL	GL662A	254	10.0	1019	40.1	790	115	S2575/D2430	S5675/D5555	7.50	DR06	15.0	18.9	D	C	73
13GBB829	A1ABB544	^E 10R22.5 ^{SL}	16	S144/D142	K	TL	GL662A	254	10.0	1019	40.1	900	130	S2800/D2650	S6175/D5840	7.50	DR06	15.0	18.9	D	C	73
13GBB680	A1ABB436	^E 11R22.5 ^{SL}	16	S146/D143	M	TL	GL662A	279	11.0	1050	41.3	830	120	S3000/D2725	S6610/D6005	8.25	DR07	15.3	19.3	D	B	74
13GBB742	A1ABB496	^E 11R22.5 ^{SL}	18	S148/D145	L	TL	GL662A	279	11.0	1050	41.3	850	125	S3150/D2900	S6940/D6395	8.25	DR07	15.3	19.3	D	B	74
13GBB772	11ABB444	^E 12R22.5 ^{SL}	16	S150/D147	M	TL	GL662A	300	11.8	1084	42.7	850	125	S3350/D3075	S7390/D6780	9.00	DR08	15.8	19.9	D	B	74
TBA	TBA	^E 12R22.5 ^{SL}	18	S152/D148	L	TL	GL662A	300	11.8	1084	42.7	850	125	S3550/D3150	S7830/F6940	9.00	DR08	15.8	19.9	D	B	74
13GBB696	A1ABB450	^E 295/80R22.5 ^{SL}	16	S150/D146	M	TL	GL662A	298	11.7	1044	41.1	800	115	S3350/D3000	S7390/D6610	9.00	DR08	15.8	19.9	C	C	74
13GBB678	A1ABB407	^E 295/80R22.5 ^{SL}	18	S152/D148	L	TL	GL662A	298	11.7	1044	41.1	850	125	S3550/D3150	S7830/F6940	9.00	DR08	15.8	19.9	C	C	74
13GBB692	11ABB413	^E 315/80R22.5 ^{SL}	18	S154/D150	M	TL	GL662A	312	12.3	1076	42.4	825	120	S3750/D3350	S8270/D7390	9.00	DR08	17.3	21.8	D	B	74
13GBB731	A1ABB485	^E 315/80R22.5 ^{SL}	20	S156/D150	L	TL	GL662A	312	12.3	1076	42.4	850	125	S4000/D3750	S8820/D7390	9.00	DR08	17.3	21.8	D	B	74

GL665A On & Off Road All-Position Radial M+S

Product Features

- Excellent tear resistance under bad surface conditions
- Double tread structure reduces heat build up
- Deep tread pattern gives long service life
- High traction pattern design
- Lateral groove at shoulder area, assists heat dispersion ensuring higher durability
- Latest tread compound technology gives the optimum compromise between wear and tear resistance

Recommended Vehicle Types & Position



Recommended Position ●
Alternative Possible Position ●



TECHNICAL DATA

Part No.	ERP No.	Tyre Size	Ply Rating	Load Index	Speed Symbol	Type	Pattern	Section Width (mm)	Section Width (in.)	Overall Diam. (mm)	Overall Diam. (in.)	Infl. (kPa)	Infl. (psi)	Max. Load (kg)	Max. Load (lbs.)	Design Rim Width	Tyre Valve	Tread Depth (mm)	Tread Depth (32nds)	Energy efficiency class	Wet grip class	Rolling noise class
13GBB538	A1ABB360	^E 11R22.5 ^{SL}	16	S146/D143	M	TL	GL665A	279	11.0	1050	41.3	830	120	S3000/D2725	S6610/D6005	8.25	DR07	17.0	21.4	D	B	74
13GBB744	A1ABB498	^E 11R22.5 ^{SL}	18	S148/D145	L	TL	GL665A	279	11.0	1050	41.3	850	125	S3150/D2900	S6940/D6395	8.25	DR07	17.0	21.4	D	B	74
13GBB396	A1ABB474	^E 13R22.5 ^{SL}	18	S154/D150	K	TL	GL665A	320	12.6	1124	44.3	850	125	S3750/D3350	S8270/D7390	9.75	DR08	17.5	22.0	D	A	75
13GBB624	A1ABB381	^E 13R22.5 ^{SL}	20	S156/D150	J	TL	GL665A	320	12.6	1124	44.3	875	130	S4000/D3350	S8820/D7390	9.75	DR08	17.5	22.0	D	A	75

GL689A On & Off Road All-Position Radial M+S

Product Features

- Double tread structure reduces heat build up
- Deep tread pattern gives long service life
- High traction pattern design
- Latest tread compound technology gives the optimum compromise between wear and tear resistance
- Open shoulder design makes the tyre suitable for mixed road conditions
- Strengthened carcass gives long service life and ensures the tyre can be retreaded several times
- The most recent low rolling resistance design decreases fuel consumption and lowers the overall running costs

Recommended Vehicle Types & Position



- Recommended Position ●
Alternative Possible Position ●



TECHNICAL DATA

Part No.	ERP No.	Tyre Size	Ply Rating	Load Index	Speed Symbol	Type	Pattern	Section Width (mm)	Section Width (in.)	Overall Diam. (mm)	Overall Diam. (in.)	Infl. (kPa)	Infl. (psi)	Max. Load (kg)	Max. Load (lbs.)	Design Rim Width	Tyre Valve	Tread Depth (mm)	Tread Depth (32nds)	Energy efficiency class	Wet grip class	Rolling noise class
13GBB487	A1ABB331	385/65R22.5 ^{S1}	18	158	L	TL	GL689A	389	15.3	1072	42.2	850	125	S4250	S9370	11.75	TL	18.5	23.3	E	B	76
13GBB566	11ABB336	385/65R22.5 ^{S1}	20	160	K	TL	GL689A	389	15.3	1072	42.2	900	130	S4500	S9920	11.75	TL	18.5	23.3	E	B	76
13GBB768	A1ABB503	425/65R22.5 ^{S1}	20	165	K	TL	GL689A	430	16.9	1124	44.3	825	120	S1500	11400	12.25	TL	18.5	23.3	C	C	72
13GBB769	A1ABB505	445/65R22.5 ^{S1}	20	169	K	TL	GL689A	444	17.5	1150	45.3	900	130	S1800	12800	13.00	TL	18.5	23.3	C	C	72

GL663D On & Off Road Drive-Position Radial M+S

Product Features

- Wide lateral groove design gives high traction when used on soft road surfaces
- Deep tread pattern gives long service life
- Specially developed pattern design makes the tyre applicable for use on different road surfaces
- Latest tread compound technology gives the optimum compromise between wear and tear resistance

Recommended Vehicle Types & Position



- Recommended Position ●
Alternative Possible Position ●



TECHNICAL DATA

Part No.	ERP No.	Tyre Size	Ply Rating	Load Index	Speed Symbol	Type	Pattern	Section Width (mm)	Section Width (in.)	Overall Diam. (mm)	Overall Diam. (in.)	Infl. (kPa)	Infl. (psi)	Max. Load (kg)	Max. Load (lbs.)	Design Rim Width	Tyre Valve	Tread Depth (mm)	Tread Depth (32nds)	Energy efficiency class	Wet grip class	Rolling noise class
13GBB690	11ABB411	313R22.5 ^{S1}	18	S154/D150	K	TL	GL663D	320	12.6	1124	44.3	850	125	S3750/D3350	S8270/D7390	9.75	DR08	19.5	24.6	D	C	76
13GBB869	A1ABB011	313R22.5 ^{S1}	20	S156/D150	J	TL	GL663D	320	12.6	1124	44.3	875	130	S4000/D3350	S8820/D7390	9.75	DR08	19.5	24.6	D	C	76

GL687D On & Off Road Drive-Position Radial M+S

Product Features

- Undirectional pattern design
- Deeper groove design increases service life
- Wider tire cap design gives high traction
- A streamline formed groove design gives the tyre self-clean properties when used on construction sites
- Thick and strong tread block design provides for high traction

Recommended Vehicle Types & Position



- Recommended Position ●
 Alternative Possible Position ●



TECHNICAL DATA

Part No.	ERP No.	Tyre Size	Ply Rating	Load Index	Speed Symbol	Type	Pattern	Section Width (mm)	Section Width (in.)	Overall Diam. (mm)	Overall Diam. (in.)	Infl. (kPa)	Infl. (psi)	Max. Load (kg)	Max. Load (lbs.)	Design Rim Width	Tyre Valve	Tread Depth (mm)	Tread Depth (32nds)	Energy efficiency class	Wet grip class	Rolling noise class
13GBB802	A1ABB527	¹ 11.00R20 ⁵⁴	16	S150/D147	K	TT	GL687D	293	11.5	1085	42.7	830	120	S3350/D3075	S7390/D6780	8.00	DG09C	19.5	24.6	E	B	76
13GBB058	11ABB049	¹ 11.00R20 ⁵⁴	18	S152/D149	J	TT	GL687D	293	11.5	1085	42.7	930	135	S3550/D3250	S7830/D7160	8.00	DG09C	19.5	24.6	E	B	76
13GBB127	11ABB063	¹ 12.00R20 ⁵⁴	18	S154/D151	K	TT	GL687D	313	12.3	1122	44.2	830	120	S3750/D3450	S8270/D7610	8.50	DG09C	19.5	24.6	D	C	76
13GBB270	A1ABB206	¹ 315/80R22.5 ⁵¹	18	S154/D150	L	TL	GL687D	312	12.3	1076	42.4	825	120	S3750/D3350	S8270/D7390	9.00	DR08	21.0	26.5	E	B	76
13GBB278	11ABB107	¹ 315/80R22.5 ⁵¹	20	S156/D150	G	TL	GL687D	312	12.3	1076	42.4	850	125	S4000/D3750	S8820/D7390	9.00	DR08	21.0	26.5	E	B	76
13GBB951	11ABB584	¹ 13R22.5 ⁵¹	18	S154/D150	K	TL	GL687D	320	12.6	1124	44.3	850	125	S3750/D3350	S8270/D7390	9.75	DR08	19.5	24.6	E	B	73
TBA	A1ABB646	¹ 13R22.5 ⁵¹	20	S156/D150	J	TL	GL687D	320	12.6	1124	44.3	875	130	S4000/D3350	S8820/D7390	9.75	DR08	19.5	24.6	E	B	73

GL670T On & Off Road Trailer-Position Radial M+S

Product Features

- Open shoulder design ensures the tyre is applicable for use under mixed road conditions
- Good heat dispersion gives the tyre excellent durability
- Latest compound technology ensures the tyre has excellent abrasion resistance
- Optimised crown gives the tyre good puncture resistance properties
- Strengthened carcass gives long service life and ensures the tyre can be retreaded several times

Recommended Vehicle Types & Position



- Recommended Position ●
 Alternative Possible Position ●



TECHNICAL DATA

Part No.	ERP No.	Tyre Size	Ply Rating	Load Index	Speed Symbol	Type	Pattern	Section Width (mm)	Section Width (in.)	Overall Diam. (mm)	Overall Diam. (in.)	Infl. (kPa)	Infl. (psi)	Max. Load (kg)	Max. Load (lbs.)	Design Rim Width	Tyre Valve	Tread Depth (mm)	Tread Depth (32nds)	Energy efficiency class	Wet grip class	Rolling noise class
13GBB636	A1ABB387	¹ 385/65R22.5 ⁵¹	18	158	L	TL	GL670T	389	15.3	1072	42.2	850	125	S4250	S9370	11.75	TL	17.0	21.4	C	D	76
13GBB639	A1ABB390	¹ 385/65R22.5 ⁵¹	20	160	K	TL	GL670T	389	15.3	1072	42.2	900	130	S4500	S9920	11.75	TL	17.0	21.4	C	D	76
13GBB641	A1ABB392	¹ 425/65R22.5 ⁵¹	20	165	K	TL	GL670T	430	16.9	1124	44.3	825	120	S1500	11400	12.25	TL	17.0	21.4	C	D	76
13GBB642	A1ABB393	¹ 445/65R22.5 ⁵¹	20	169	K	TL	GL670T	444	17.5	1150	45.3	900	130	S800	12800	13.00	TL	17.0	21.4	C	D	76

GL718D Winter Service Drive-Position Radial M+S

Product Features

- All-weather highway drive tyre
- Serrated sipes help deliver exceptional traction and excellent wear
- 20mm original tread depth
- Wide open shoulder grooves deliver additional traction balanced with tread life
- Unidirectional pattern design provide excellent driving performance.
- Tyre approved for severe snow use and marked with 3-Peak Mountain Snowflake Symbol

Recommended Vehicle Types & Position



- Recommended Position ●
- Alternative Possible Position ●



TECHNICAL DATA

Part No.	ERP No.	Tyre Size	Ply Rating	Load Index	Speed Symbol	Type	Pattern	Section Width (mm)	Section Width (in.)	Overall Diam. (mm)	Overall Diam. (in.)	Infl. (kPa)	Infl. (psi)	Max. Load (kg)	Max. Load (lbs.)	Design Rim Width	Tyre Valve	Tread Depth (mm)	Tread Depth (32nds)	Energy efficiency class	Wet grip class	Rolling noise class
13GBB779	A1ABB508	[‡] 295/80R22.5 ^{SL}	16	S150/D146	M	TL	GL718D	298	11.7	1044	41.1	800	115	S3350/D3000	S7390/D6610	9.00	DR08	20.0	25.2	E	C	74
13GBB780	A1ABB509	[‡] 295/80R22.5 ^{SL}	18	S152/D148	L	TL	GL718D	298	11.7	1044	41.1	850	125	S3550/D3150	S7830/F6940	9.00	DR08	20.0	25.2	E	C	74

GL828A Urban Bus All-Position Radial

Product Features

- Self-cleaning grooves and extra deep undertread design gives the tyre excellent self-cleaning and puncture resistance properties so as to provide optimum safety
- Optimised groove shape design gives the tyre excellent rain dispersion and wet grip properties
- Extra deep pattern for long service life
- Thick sidewall design protects sidewall from scrapes and offer optimum sidewall protection
- The most recent low rolling resistance design decreases fuel consumption and lowers the overall running costs
- Superstrong patented bead design provides optimum carrying capacity and resistance to blow outs

Recommended Vehicle Types & Position



- Recommended Position ●
- Alternative Possible Position ●



TECHNICAL DATA

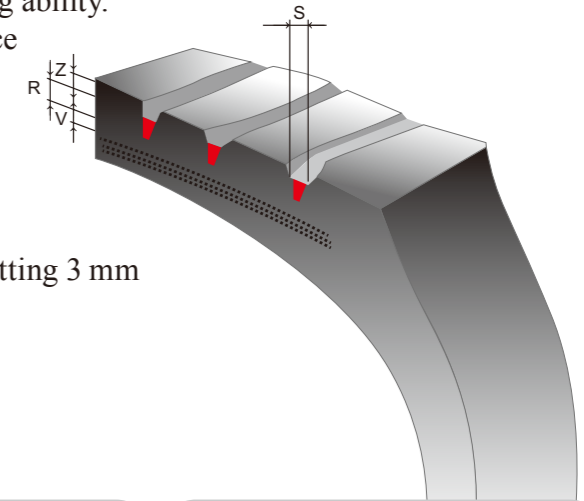
Part No.	ERP No.	Tyre Size	Ply Rating	Load Index	Speed Symbol	Type	Pattern	Section Width (mm)	Section Width (in.)	Overall Diam. (mm)	Overall Diam. (in.)	Infl. (kPa)	Infl. (psi)	Max. Load (kg)	Max. Load (lbs.)	Design Rim Width	Tyre Valve	Tread Depth (mm)	Tread Depth (32nds)	Energy efficiency class	Wet grip class	Rolling noise class
13GBB336	11ABB130	[‡] 11R22.5 ^{SL}	16	S146/D143	J	TL	GL828A	279	11.0	1050	41.3	830	120	S3000/D2725	S6610/D6005	8.25	DR07	20.0	25.2	D	B	74
13GBB745	A1ABB499	[‡] 11R22.5 ^{SL}	18	S148/D145	G	TL	GL828A	279	11.0	1050	41.3	850	125	S3150/D2900	S6940/D6395	8.25	DR07	20.0	25.2	D	B	74
13GBB531	11ABB310	[‡] 275/70R22.5 ^{SL}	16	S144/D141	J	TL	GL828A	276	10.9	958	37.7	830	120	S2800/D2575	S6175/D5675	8.25	DR07	20.0	25.2	D	C	76
13GBB758	11ABB433	[‡] 275/70R22.5 ^{SL}	18	S148/D145	G	TL	GL828A	276	10.9	958	37.7	900	130	S3150/D2900	S6940/D6395	8.25	DR07	20.0	25.2	D	C	76

Tyre load limits at various cold inflation pressures

Item Size	Ply Rating	Load Index	Speed Symbol	LI	Tire Fitment	Load Capacity(kg) per axle at inflation pressure(bar) (psi)									
						4.5(65)	5(73)	5.5(80)	6.0(87)	6.5(94)	7.0(102)	7.5(109)	8.0(116)	8.5(123)	9.0(131)
11.00R20	18	S152/D149	J	152	S	4265	4640	5010	5370	5725	6075	6420	6760	7100	
	16	S150/D147	K	150	S	4380	4725	5070	5405	5735	6060	6380	6700		
				149	D	8200	8800	9400	10000	10600	11200	11800	13000		
				147	D	8320	8880	9440	10000	10600	11160	11720	12300		
12.00R20	20	S156/D153	J	156	S	4590	4995	5390	5780	6165	6540	6910	7280	8000	
	18	S154/D151	K	154	S	4905	5290	5675	6050	6420	6785	7140	7500		
				153	D	8800	9440	10080	10720	11360	12000	12680	13320		
				151	D	9320	9960	10600	11240	11880	12520	13160	13800		
215/75R17.5	16	S135/D133	J	135	S	2385	2595	2800	3005	3200	3400				
	12	S126/D124	M	126	S	2385	2595	2800	3005	3200	3400				
				133	D	5385	5815	6235	6645	7050	7450	7845	8240		
235/75R17.5	16	S143/D141	J	143	S	3405	3675	3940	4200	4455	4710	4955	5205	5450	
	14	S132/D130	M	132	S	2520	2745	2960	3175	3385	3590	3795	4000		
				141	D	6435	6945	7445	7935	8420	8900	9370	9835		
				130	D	4795	5215	5630	6035	6435	6825	7215	7600		
225/70R19.5	14	S128/D126	L	128	S	2500	2700	2900	3100	3300	3440	3600			
				126	D	4720	5080	5440	5800	6200	6480	6800			
245/70R19.5	16	S136/D134	M	136	S	2690	2930	3160	3390	3610	3835	4050	4265	4480	
				134	D	5095	5545	5985	6415	6840	7260	7670	8075	8480	
265/70R19.5	18	S143/D141	J	143	S	3560	3845	4120	4395	4665	4930	5190	5450		
	16	S140/D138	M	140	S	3155	3430	3700	3970	4230	4490	4745	5000		
				141	D	6735	7270	7795	8310	8815	9315	9810	10300		
				138	D	5955	6480	6995	7495	7995	8480	8960	9440		
9R22.5	14	S136/D134	M	136	S										
				134	D		6440	6680	7280	7560	8040	8280	8480		
10R22.5	16	S144/D142	L	144	S				4240	4520	4795	5065	5335	5600	
	14	S141/D139	M	141	S		3580	3840	4100	4360	4620	4880	5150		
				142	D				8020	8555	9075	9590	10100		
11R22.5				139	D		6600	7120	7640	8160	8680	9200	9720		
	18	S148/D145	L(G)	148	S	3785	4120	4445	4765	5080	5390	5695	6000	6300	
	16	S146/D143	M(J)	146	S	4200	4520	4740	5200	5400	5740	5880	6000		
				145	D	6970	7585	8185	8775	9355	9930	10490	11050		
12R22.5				143	D	8160	8640	9000	9840	10240	10720	10840	10900		
	18	S152/D148	L	152	S	4265	4640	5010	5370	5725	6075	6420	6760		
	16	S150/D147	M	150	S	4225	4600	4960	5320	5670	6020	6360	6700		
				148	D	7575	8240	8890	9535	10165	10785	11395	12000		
13R22.5				147	D	8120	8720	9320	9920	10520	11120	11720	12300		
	20	S156/D150	J	156	S	4590	4995	5390	5780	6165	6540	6910	7280	8000	
	18	S154/D150	K	154	S	4505	4905	5290	5675	6050	6420	6785	7140	7500	
				150	D	8055	8760	9455	10140	10810	11470	12120	12765		
255/70R22.5	16	S140/D137	M	140	S	3300	3640	3800	3960	4240	4440	4720	5000		
				137	D	6200	6840	7200	7440	8000	8080	8480	9200		
275/70R22.5	18	S148/D145	K(G)	148	S	3615	3935	4245	4550	4855	5150	5440	5730	6015	6300
	16	S144/D141	M(J)	144	S	3365	3660	3950	4235	4515	4790	5065	5330	5600	
				145	D	6660	7245	7820	8385	8940	9485	10025	10555	11080	
				141	D	6200	6740	7275	7800	8315	8820	9330	9815	10300	
315/70R22.5	18	S152/D148	L	152	S	4265	4640	5010	5370	5725	6075	6420	6760	7100	
				148	D	7575	8240	8890	9535	10165	10785	11395	12000		
275/80R22.5	16	S147/D144	M	147	S			4480	4680	5000	5240	5600	5780	6150	
				144	D			8240	8520	9200	9560	10300	10520	11200	
295/80R22.5	18	S152/D148	L	152	S	4265	4640	5010	5370	5725	6075	6420	6760	7100	
	16	S150/D146	M	150	S	4225	4600	4965	5320	5675	6020	6360	6700		
				148	D	7575	8240	8890	9535	10165	10785	11395	12000		
				146	D	7505	8170	8820	9450	10080	10695	11300	12000		
315/80R22.5	20	S156/D150	L(G)	156	S	4590	4995	5390	5780	6165	6540	6910	7280	8000	
	18	S154/D150	M(L)	154	S	4505	4905	5290	5675	6050	6420	6785	7140	7500	
				150	D	8055	8760	9455	10140	10810	11470	12120	12765		
455/40R22.5	20	160	J	160	S	5165	5620	6065	6505	6935	7360	7775	8190	8595	9000
385/55R22.5	20	160	K	160	S	5165	5620	6065	6505	6935	7360	7775	8190	8595	9000
385/65R22.5	20	160	L	160	S	5165	5620	6065	6505	6935	7360	7775	8190	8595	9000
	18	158	K	158	S	5110	5555	6000	6430	6855	7275	7690	8095	8500	
425/65R22.5	20	165	K	165	S	6190	6735	7270	7795	8310	8815	9315	9810	10300	
445/65R22.5	20	169	K	169	S	6660	7245	7820	8385	8940	9485	10025	10555	11080	

Regrooving

- Tyre must be de-mounted from the rim before regrooving
- Only a tyre marked REGROOVABLE on its sidewall may be regrooved.
- Regrooving is carried out when tyre is close to the tread wear indicator TWI.
- Professionally-performed work does not affect retreading ability.
- Please ensure that tyres are only regrooved in accordance with the below instructions

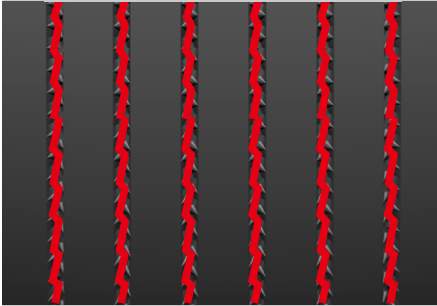


- R** Maximum recutting depth
- V** Minimum tread thickness under a groove after recutting 3 mm
- Z** Remaining tread depth 2-3 mm before regrooving
- S** Recutting width

GL828A			GL267D			GL268D		
Tyre Size	Max. Recutting Depth (mm)	Recutting Width (mm)	Tyre Size	Max. Recutting Depth (mm)	Recutting Width (mm)	Tyre Size	Max. Recutting Depth (mm)	Recutting Width (mm)
11R22.5	2.5	5-8	315/70R22.5	3	5-8	11R22.5	3	5-8
275/70R22.5	2.5	5-8	295/80R22.5	3	5-8			
			315/80R22.5	3	5-8			
			12R22.5	3	5-8			

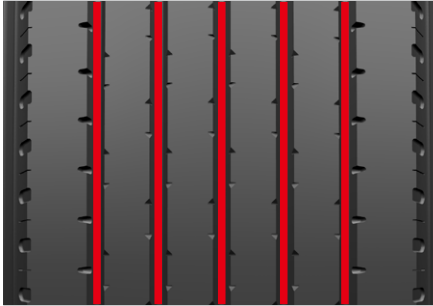
GL282A			GL283A			GL286A/GL286T		
Tyre Size	Max. Recutting Depth (mm)	Recutting Width (mm)	Tyre Size	Max. Recutting Depth (mm)	Recutting Width (mm)	Tyre Size	Max. Recutting Depth (mm)	Recutting Width (mm)
315/70R22.5	2.5	5-8	215/75R17.5	2	5-8	385/65R22.5	3	5-8
295/80R22.5	2.5	5-8	225/70R19.5	2	5-8	425/65R22.5	3	5-8
315/80R22.5	2.5	5-8	245/70R19.5	2	5-8			
			265/70R19.5	2.5	5-8			
			255/70R22.5	2.5	5-8			
			275/80R22.5	2.5	5-8			
			275/80R22.5	2.5	5-8			
			9R22.5	2.5	5-8			
			10R22.5	2.5	5-8			
			11R22.5	2.5	5-8			
			12R22.5	2.5	5-8			

GL251T



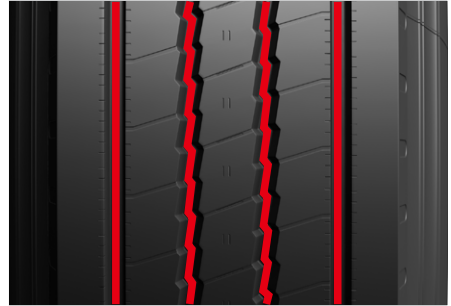
Tyre Size	Max. Recutting Depth (mm)	Recutting Width (mm)
455/40R22.5	2	5-8

GL252T



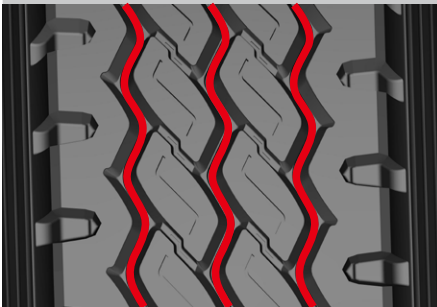
Tyre Size	Max. Recutting Depth (mm)	Recutting Width (mm)
385/55R22.5	3	5-8

GL283T



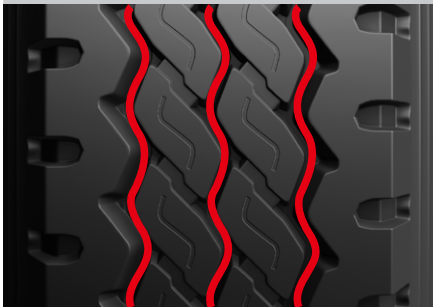
Tyre Size	Max. Recutting Depth (mm)	Recutting Width (mm)
215/75R17.5	2	5-8
235/75R17.5	2	5-8

GL662A



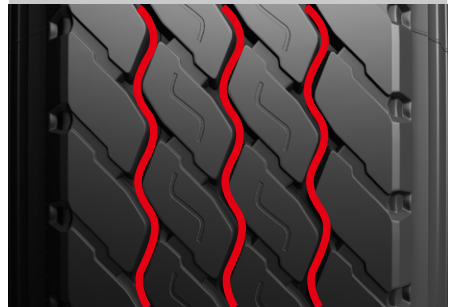
Tyre Size	Max. Recutting Depth (mm)	Recutting Width (mm)
10R22.5	2.5	5-8
11R22.5	2.5	5-8
12R22.5	2.5	5-8
295/80R22.5	2.5	5-8
315/80R22.5	2.5	5-8

GL665A



Tyre Size	Max. Recutting Depth (mm)	Recutting Width (mm)
11R22.5	3	5-8
13R22.5	3	5-8

GL689A



Tyre Size	Max. Recutting Depth (mm)	Recutting Width (mm)
385/65R22.5	3	5-8
425/65R22.5	3	5-8
445/65R22.5	3	5-8

GL663D



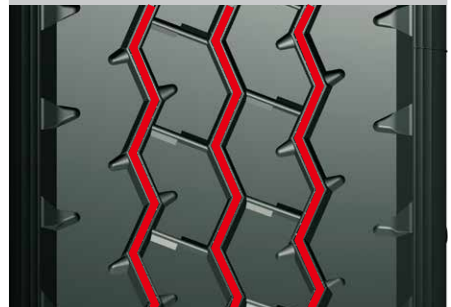
Tyre Size	Max. Recutting Depth (mm)	Recutting Width (mm)
13R22.5	3	5-8

GL687D



Tyre Size	Max. Recutting Depth (mm)	Recutting Width (mm)
11.00R20	3.5	5-8
12.00R20	3.5	5-8
13R22.5	3.5	5-8
315/80R22.5	3.5	5-8

GL670T



Tyre Size	Max. Recutting Depth (mm)	Recutting Width (mm)
385/65R22.5	3	5-8
425/65R22.5	3	5-8
445/65R22.5	3	5-8